



Capital Budget Community Meeting on Future School Facility Projects - Dulles North Area Focus

June 16, 2022

LCPS Capital Budget Overview



TABLE OF CONTENTS

LOUDOUN COUNTY PUBLIC SCHOOLS - EXISTING & PLANNED SCHOOLS	3
CAPITAL PLANNING & BUDGETING - EXECUTIVE SUMMARY	9
SCHOOL BOARD ADOPTED 2023 – FY 2028 CAPITAL IMPROVEMENT PROGRAM (CIP) & FY 2029 – FY 2052 CAPITAL PROJECTS FORECAST	29
New Construction	37
Other Projects	43
Capital Renewals & Alterations	51
Previously Approved/Appropriated Projects	79
SCHOOL BOARD ADOPTED FY 2023 – FY 2028 CAPITAL ASSET PRESERVATION PROGRAM (CAPP)	89
LAND ACQUISITION	111
BUILDING CAPACITY	115
FACILITY ANALYSIS	127
Eastern Loudoun Planning District	131
Ashburn Planning District	137
Dulles North Planning District	143
Dulles South Planning District	149
Central Loudoun Planning District	157
Western Loudoun Planning District	165
GLOSSARY OF TERMS.....	173
SUPPLEMENTAL LOUDOUN COUNTY PUBLIC SCHOOLS INFORMATION	
APPENDIX A: September 30 Enrollment History	185
September 30, 2021 Enrollment by School	187
APPENDIX B: Student Assignments Outside of Geographic Planning District.....	189
APPENDIX C: Student Generation Factors	191
APPENDIX D: Building Location Map	193
School Facilities, 2021-2022 School Year	194
APPENDIX E: 2022-2023 Schools by Geographic Planning District and High School Cluster	199

LCPS Capital Budget

Capital Improvement Program (CIP)

Provides six-year student enrollment projections for division and individual schools with an adopted attendance zone

Involves acquisition, development, construction, and/or renovation of facilities, infrastructure, and capital equipment

- Short-Term CIP (Fiscal Years 1-6)
 - Years 1 and 2 Most Critical for Project Identification and Funding
 - Individual Project Pages
- Medium-Term CIP (Fiscal Year 7-10)
 - Corresponds to Board of Supervisors 10-Year Capital Needs Assessment (CNA)
- Long-Term Outlook (Years 11-30)

Capital Asset Preservation Program (CAPP)

Involves repair of major facility components and systems, including repair by replacement (e.g., electrical, plumbing, roofing, HVAC, structural)

- Fiscal Years 1-6
 - Project Specific Detail Provided by Component/System and by Individual School

DULLES NORTH GEOGRAPHIC PLANNING DISTRICT

BRIAR WOODS HIGH SCHOOL CLUSTER

Briar Woods High School
Eagle Ridge Middle School
Hillside Elementary School
Mill Run Elementary School
Waxpool Elementary School

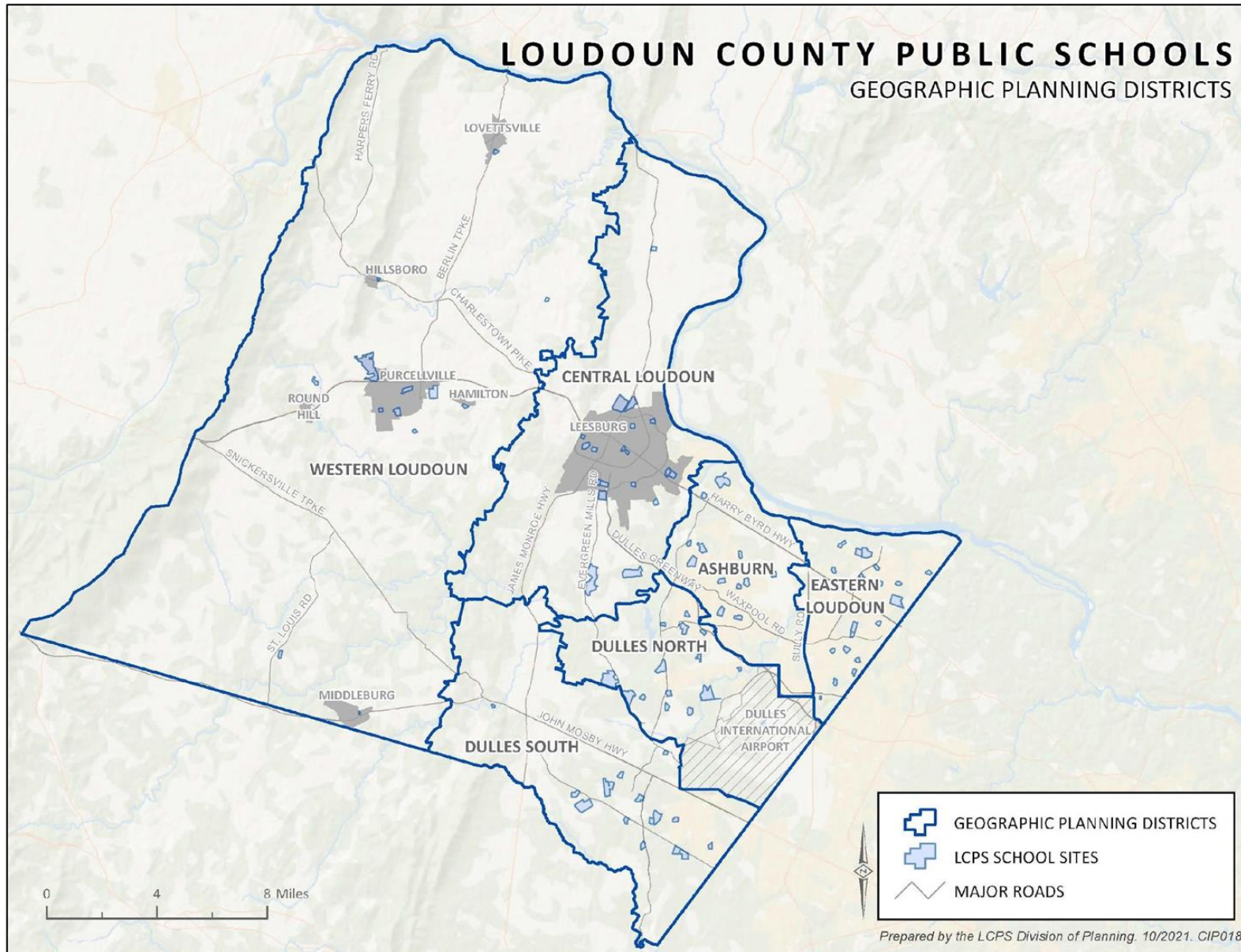
INDEPENDENCE HIGH SCHOOL CLUSTER

Independence High School
Brambleton Middle School
Creighton's Corner Elementary School
Legacy Elementary School

Madison's Trust Elementary School

ROCK RIDGE HIGH SCHOOL CLUSTER

Rock Ridge High School
Stone Hill Middle School
Elaine E. Thompson Elementary School
Moorefield Station Elementary School
Rosa Lee Carter Elementary School



Facility Analysis

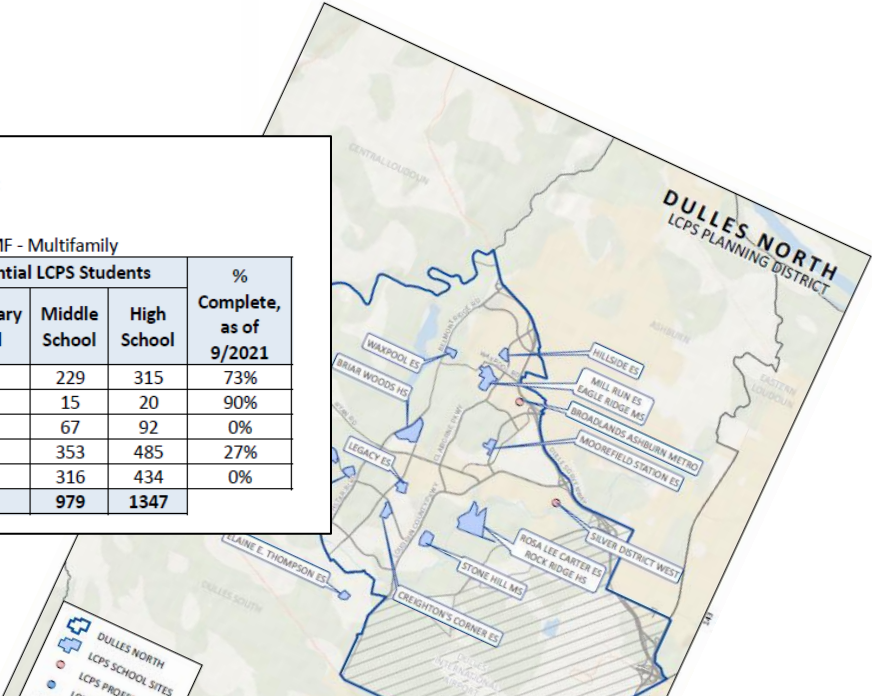
LCPS Planning District Detail

Provides Map of All School Locations with District and Approved (Unbuilt) Residential Development

Individual School Detail

Provided by LCPS Planning District, Includes Base Building Capacity, Current Year Enrollment, Six Years of Projected Enrollment

Dulles North Planning District Approved, Unbuilt Residential Development as of September 2021								
SFD - Single Family Detached SFA - Single Family Attached MF - Multifamily								
Residential Development	Approved Residential Units				Potential LCPS Students			% Complete, as of 9/2021
	SFD	SFA	MF	Total	Elementary School	Middle School	High School	
BRAMBLETON	2500	3070	1099	6669	411	229	315	73%
BROADLANDS	1976	1251	654	3881	26	15	20	90%
BROADLANDS ASHBURN METRO	0	89	754	843	119	67	92	0%
MOOREFIELD STATION	50	1300	4650	6000	633	353	485	27%
SILVER DISTRICT WEST	0	381	3325	3706	566	316	434	0%
Planning District Total, as of September 2021	4526	6091	10482	21099	1755	979	1347	



MIDDLE SCHOOL SUMMARY: DULLES NORTH																	
General Planning District Description																	
North of Route 50 (John Mosby Highway), East of Goose Creek, South of Route 267 (Dulles Greenway), West of Route 28 (Sully Road)/Fairfax County																	
FY 2023 - FY 2028 CIP PLANNING PERIOD																	
MIDDLE SCHOOLS	2021-22 BASE	30-Sep-21 ACTUAL	2022-23 SCHOOL YEAR PROJECTION			2023-24 SCHOOL YEAR PROJECTION			2024-25 SCHOOL YEAR PROJECTION			2025-26 SCHOOL YEAR PROJECTION			2026-27 SCHOOL YEAR PROJECTION		
	CAPACITY	ENROLLMENT	ENROLL	SPACE	UTILIZE	ENROLL	SPACE	UTILIZE	ENROLL	SPACE	UTILIZE	ENROLL	SPACE	UTILIZE	ENROLL	SPACE	UTILIZE
BRAMBLETON MS ^A	1445	1630	1779	(334)	123%	1988	(543)	138%	2041	(596)	141%	2006	(561)	139%	1903	(458)	132%
EAGLE RIDGE MS ^B	1227	1179	1158	69	94%	1176	51	96%	1100	127	90%	991	236	81%	894	465	66%
STONE HILL MS	1397	1137	1107	290	79%	1092	305	78%	1061	336	76%	1045	352	75%	1035	362	74%
MS-14 ^C									TBD	1445		TBD	1445		TBD	1445	
	4069	3946	4044	25		4256	(187)		4202	1312		4042	1472		3832	1814	
SOME MIDDLE SCHOOL STUDENTS RESIDING IN THE DULLES NORTH PLANNING DISTRICT ARE CURRENTLY ATTENDING MIDDLE SCHOOL IN THE ASHBURN PLANNING DISTRICT.																	
SOME MIDDLE SCHOOL STUDENTS RESIDING IN THE ASHBURN PLANNING DISTRICT ARE CURRENTLY ATTENDING MIDDLE SCHOOL IN THE DULLES NORTH PLANNING DISTRICT.																	
SOME MIDDLE SCHOOL STUDENTS RESIDING IN THE DULLES SOUTH PLANNING DISTRICT ARE CURRENTLY ATTENDING MIDDLE SCHOOL IN THE DULLES NORTH PLANNING DISTRICT.																	
A - PRIOR TO THE OPENING OF MS-14, SOME BRAMBLETON MS STUDENTS WILL BE SCHEDULED FOR CERTAIN CLASSES AT INDEPENDENCE HS.																	
B - A NINE (9) CLASSROOM ADDITION IS PLANNED AT EAGLE RIDGE MS, TO BE COMPLETE BY THE START OF 2026-27 SCHOOL YEAR; ANTICIPATED CAPACITY FOR EAGLE RIDGE MS IN FALL 2026 IS 1359.																	
C - A NEW MIDDLE SCHOOL (MS-14) IS PLANNED TO OPEN AT THE START OF THE 2024-25 SCHOOL YEAR WITH AN ANTICIPATED BASE CAPACITY OF 1445. MS-14 WILL BE CONSTRUCTED ON A PURCHASED SITE (PROXIMATE TO THE INTERSECTION OF RYAN ROAD/RED HILL ROAD/EVERGREEN MILLS ROAD).																	
TBD - TO BE DETERMINED, FOLLOWING THE ADOPTION OF AN ATTENDANCE ZONE FOR THE SCHOOL																	

Dulles North Area: FY 2023 CAPP

Electrical Projects

- Hillside ES – Replace Clock & Bell System

HVAC Projects

- Eagle Ridge MS – Replace Gym A/C Units
- Mill Run ES – Replace Chiller

Resurfacing Projects

- Brambleton MS – Replace Asphalt, Seal Coat & Restripe

Structure Repair Projects

- Mill Run ES – Replace Gym Floor with Sports Floor

Dulles North Area: FY 2023 – FY 2028 CIP

Capital Renewal & Alteration Projects

- Baseball/Softball Press Boxes, Briar Woods HS
- Classroom Addition & Modular Classroom Removal, Briar Woods HS*
- Classroom Addition, Eagle Ridge MS
- Fine Arts Storage Improvements, Secondary Schools
- High School Practice Fields – Lighting & Synthetic Turf
- High School Tennis Court Lighting
- Privacy Space Conversions
- Safety Security Improvements
- School Walking Tracks, Rosa Lee Carter ES & Stone Hill MS
- Unified Communication Systems Replacement

*Previously Appropriated Project

Dulles North Area: FY 2023 – FY 2028 CIP

- Elaine E. Thompson Elementary School (ES-23), Open Fall 2022*
- Middle School (MS-14), Open Fall 2024*
- Elementary School (ES-34), Open Fall 2028
- High School (HS-14), Open Fall 2028
- School Security Improvements, Multi Year (2019-2024)

* Previously Appropriated Projects



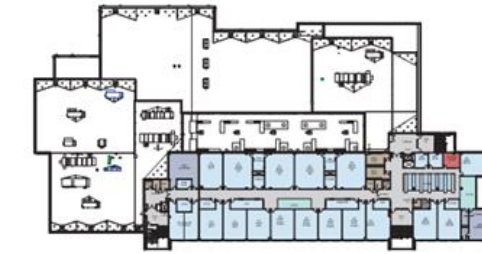
MIDDLE SCHOOL #14



MAIN ENTRANCE VIEW (EAST ELEVATION)



BACK VIEW (SOUTH ELEVATION)



FOURTH FLOOR PLAN



THIRD FLOOR PLAN



SECOND FLOOR PLAN



FIRST FLOOR PLAN



FLOOR PLAN DEPT. LEGEND

- ACADEMICS
- SHARED SPACES
- AUXILIARY SERVICES
- CIRCULATION
- COLLABORATION
- CUSTODIAL SUPPORT
- MEDIA CENTER
- BLDG. SUPPORT
- PHYSICAL EDUCATION
- SPECIAL EDUCATION
- ART DEPARTMENT
- TECH. EDUCATION
- FAMILY & CONSUMER
- FOOD SERVICES
- MUSIC DEPARTMENT/AUDITORIUM
- CLINIC
- ADMINISTRATION SUITE

- Multi-Story School
- 'House' Concept Design
- Estimated 184,593 SF
- 1445-Student Capacity
- Unlighted Outdoor Fields

Fall/Winter 2022 School Name

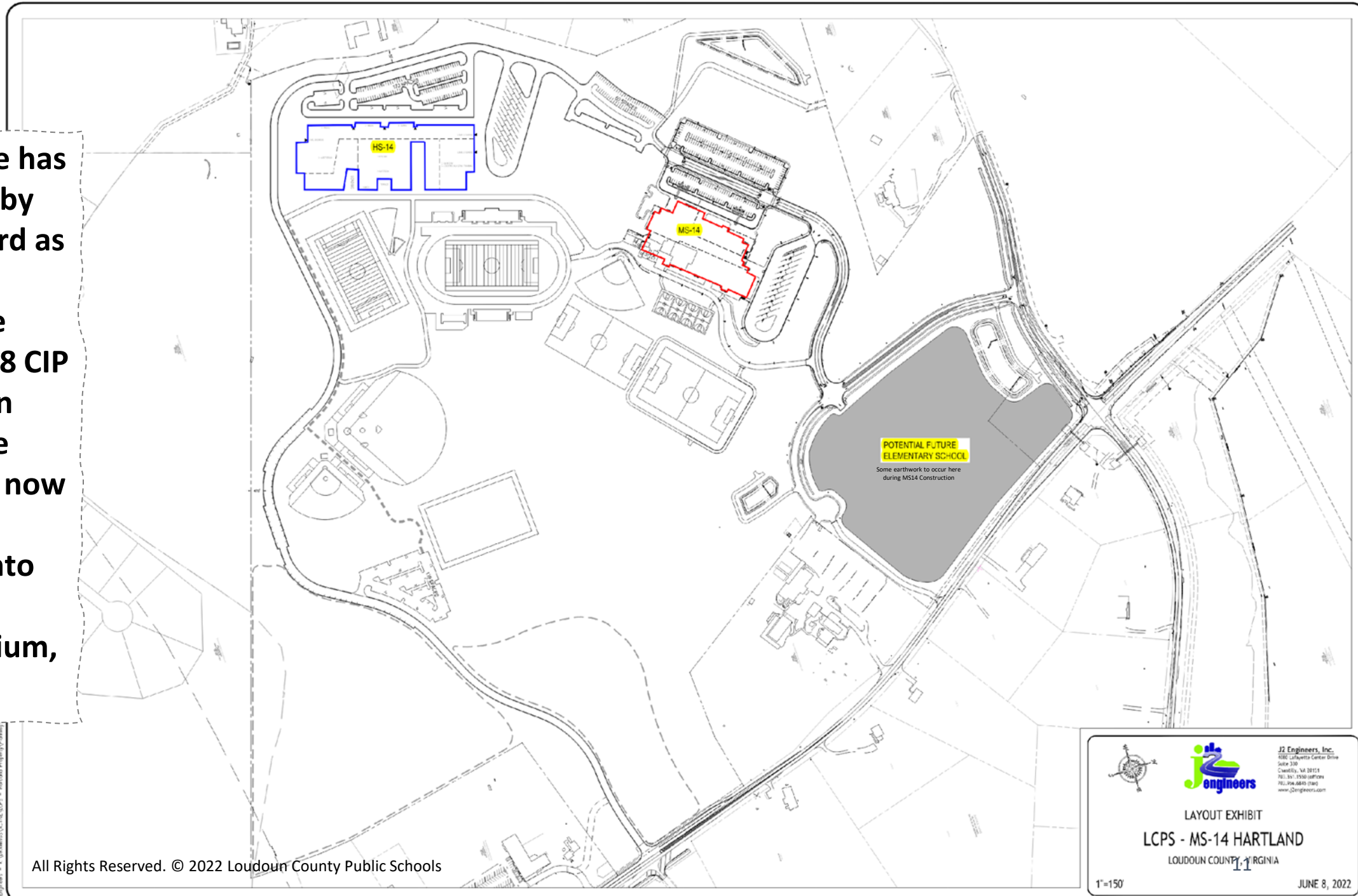
Spring 2023 Attendance Zone

Fall 2024 School Opens

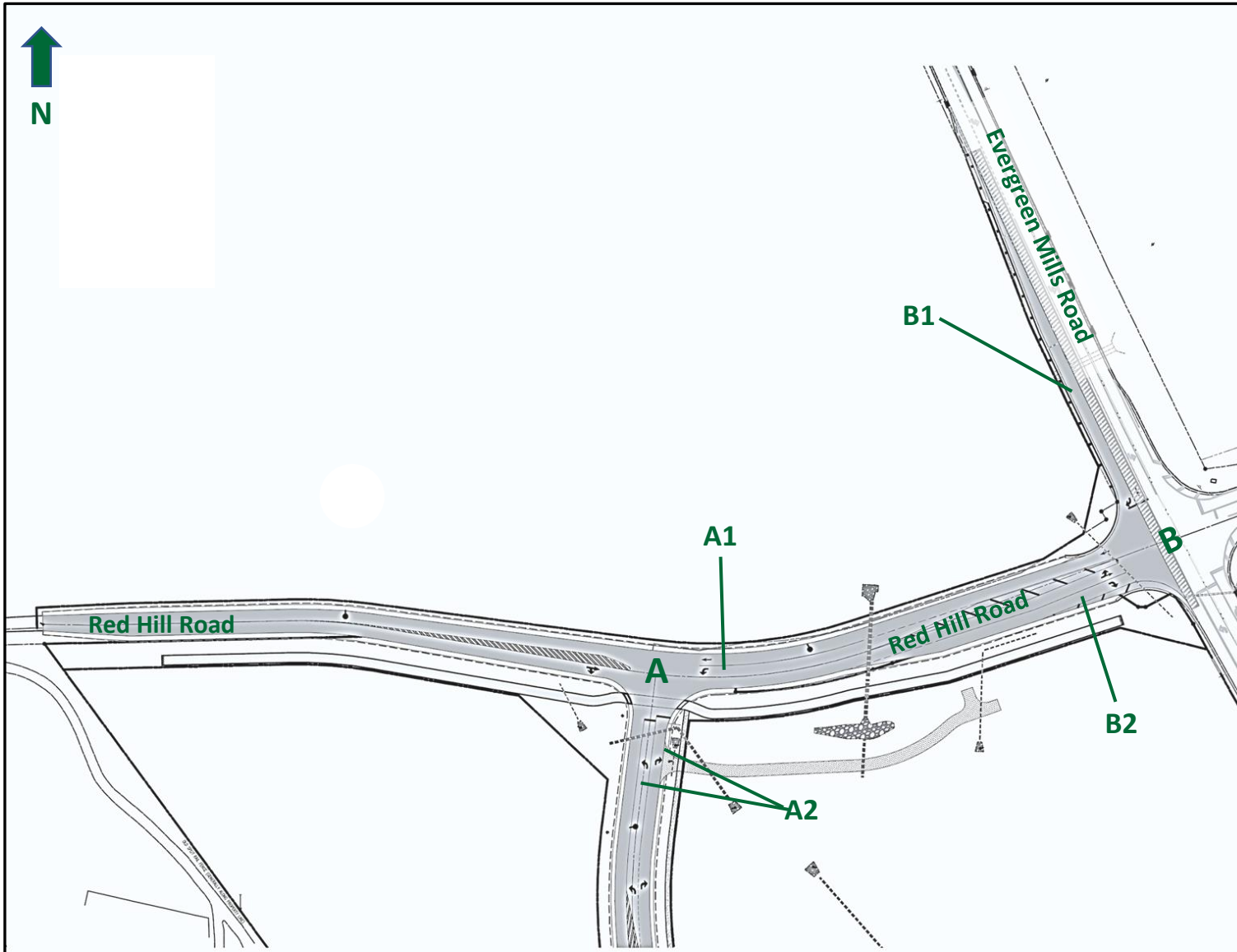
LCPS Evergreen Mill Road/Red Hill Road Property

- The only use currently approved for the property is the middle school, MS-14. When the Board of Supervisors approved the Comprehensive Plan Amendment (CPAM-2020-0001) in December 2020, the action included identifying a middle school for the property as a feature shown in the comprehensive plan.
 - CPAM-2020-0001 (General Plan Amendment for MS), Approved December 1, 2020
 - FPST-2021-0007 (Road Improvements), Approved January 6, 2022
 - FPAL-2022-0013 (Road Improvements), Approved January 6, 2022
 - CPAP-2021-0018 (Road Improvements & Floodplain Study), Approved May 23, 2022
 - STPL-2021-0033 (Site Plan for MS-14), Approved May 25, 2022
- The middle school (MS-14) is planned to open in Fall 2024.
- The proposed elementary school (Future ES) and high school (HS-14) will require the submission of a Commission Permit application. It is anticipated the application will be filed in fall/winter 2022. The high school (HS-14) is planned to open in Fall 2028; the elementary school opening is TBD.

The Field House has been removed by the School Board as a part of their adoption of the FY2023 - FY2028 CIP budget. Certain elements of the field house are now proposed to be incorporated into HS-14 (i.e., expanded stadium, gymnasium).



MS-14 Road Improvements



A Site Entrance along Red Hill Road

1. New dedicated Left Turn Lane from Red Hill Road into site
2. One inbound and two outbound lanes (left and right)
3. Unsignalized intersection

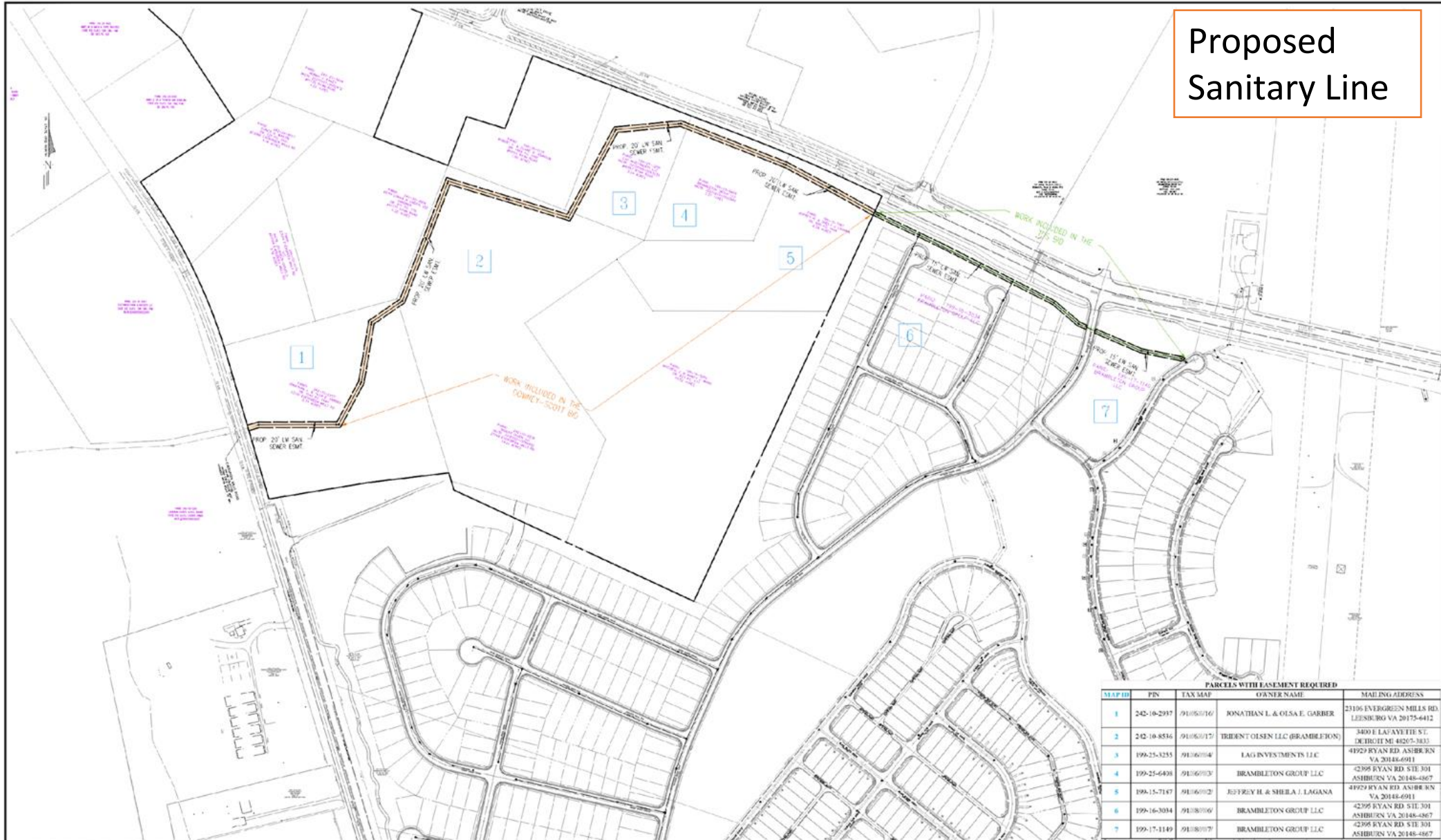
B Red Hill Road and Evergreen Mills Road

1. Extending the southbound right turn lane and taper on Evergreen Mills Road to meet VDOT standards
2. New eastbound right turn lane on Red Hill Road
3. Existing Signal will be modified

C Red Hill Road

Approximately 1,200' of Red Hill Road will be paved to VDOT standards west of Evergreen Mills Road

Proposed Sanitary Line



PARCELS WITH EASEMENT REQUIRED

MAP ID	FIN	TAX MAP	OWNER NAME	MAPPING ADDRESS
1	242-10-2937	91060116	JONATHAN L. & OLGA E. GABER	23106 EVERGREEN MILLS RD LEESBURG VA 20175-6412
2	242-10-8536	91060117	TRIDENT OLSEN LLC (BRAMBLETON)	3400 E LAUNAYETTE ST. DETROIT MI 48267-3833
3	199-25-3255	91060104	LAG INVESTMENTS LLC	41929 RYAN RD. ASHBURN VA 20148-6911
4	199-25-6408	91060103	BRAMBLETON GROUP LLC	42995 RYAN RD. STE 301 ASHBURN VA 20148-4867
5	199-15-7187	91060102	JEFFREY H. & SHEILA J. LAGANA	41929 RYAN RD. ASHBURN VA 20148-6911
6	199-16-3034	91060106	BRAMBLETON GROUP LLC	42995 RYAN RD. STE 301 ASHBURN VA 20148-4867
7	199-17-1149	91060107	BRAMBLETON GROUP LLC	42995 RYAN RD. STE 301 ASHBURN VA 20148-4867

EASEMENT REQUIRED EXHIBIT



Properties 1-5 require easements per our approved plan. Their are 3 owners, a-Gaber b-Lagana c-Brambleton Group. All 5 plats submitted to Loudoun Water for 1st review on 5/20/22. Contact info provided by Urban, no contact has been made to date with the property owners.

ARCOLA FARMS SEWER PLAN

Loudoun County, VA



Scale: 1"=150'
April 07, 2022

All Rights Reserved. © 2022 Loudoun County Public Schools

LCPS Capital Budgets Process

Month	LCPS Capital Budgets Process
June – October	Department of Support Services Meetings for Preparation of Superintendent’s Recommended CIP and CAPP Budgets, Including Six-Year Student Enrollment Projections
October	Superintendent and Cabinet Review of Recommended CIP and CAPP Budgets
Early November	Superintendent’s Recommended CIP and CAPP Budgets Presented to School Board
November - December	School Board Public Hearings and Work Sessions on CIP and CAPP Budgets
December	School Board Adoption of CIP and CAPP Budgets
February	County Administrator’s Proposed Fiscal Plan Presented to Board of Supervisors
February - April	Board of Supervisor Public Hearings and Work Sessions on Fiscal Plan
April	Board of Supervisors Adoption of Fiscal Plan

School Board Adopted FY 2023 - FY 2028 CIP & CAPP





School Board Adopted
FY 2023 - FY 2028
Capital Improvement Program
Capital Asset Preservation Program
FY 2029 - FY 2052 Capital Projects Forecast

January 11, 2022





Addendum

Capital Budget Community Meeting on Future School Facility Projects - Dulles North Area Focus

ELEMENTARY SCHOOL, ES-34



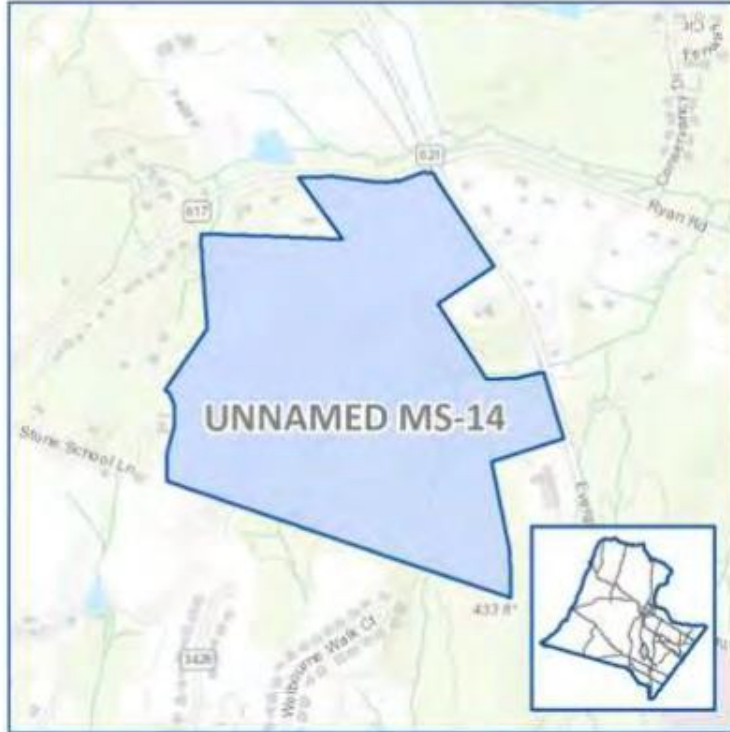
The elementary school will be built using a multi-story design. The estimated 106,323 square foot building will serve students in kindergarten through grade five. With an anticipated capacity of 960, the elementary school will include classrooms, a media center, cafeteria, multipurpose room, and unlighted outdoor physical education fields. Additional funding is provided in the project budget for a structured parking facility on the site, to serve the school.

ES-34 is planned to be in the Dulles North Planning District, on a proffered site in the Silver District West development.

Project Details	
Acres	8.33
Square Feet	106,323
Base Capacity	960
Election District	Dulles
LCPS Planning District	Dulles North
Referendum Date	TBD
School Year Opening	2029-2030

PROJECT	TASK	FUNDING	FY 2023				FY 2024				FY 2025				FY 2026				FY 2027				FY 2028				
			Q1	Q2	Q3	Q4	Q1	Q2	Q3	Q4	Q1	Q2	Q3	Q4	Q1	Q2	Q3	Q4	Q1	Q2	Q3	Q4	Q1	Q2	Q3	Q4	
ES-34, Dulles North	Design	\$ 10.075																DESIGN	BID								
	Construction and FFE	\$ 66.785																		CONSTRUCTION							
	Total Appropriations	\$ 76.860																\$ 10.075	\$ 66.785								

HIGH SCHOOL, HS-14



The high school will be built using a multi-story design. The estimated 336,254 square foot building will serve students in grades nine through twelve. With an anticipated capacity of 2100, the high school will include classrooms, cafeteria, auditorium, media center, gymnasium, an auxiliary gymnasium, outdoor physical education fields, and other associated spaces to support the high school program. The football and track stadium at the high school will hold 5,000 spectators to host State Championship meets and events, and an expanded gymnasium would hold up to 3,000 spectators.

HS-14 is planned to be co-located with MS-14, a future elementary school (TBD), and other public uses on a LCPS-owned site.

Project Details	
Acres	75
Square Feet	336,254
Base Capacity	2,100
Election District	Blue Ridge
LCPS Planning District	Dulles North
Referendum Date	TBD
School Year Opening	2028-2029

PROJECT	TASK	FUNDING	FY 2023				FY 2024				FY 2025				FY 2026				FY 2027				FY 2028			
			Q1	Q2	Q3	Q4	Q1	Q2	Q3	Q4	Q1	Q2	Q3	Q4	Q1	Q2	Q3	Q4	Q1	Q2	Q3	Q4	Q1	Q2	Q3	Q4
HS-14, Dulles North	Design	\$ 20.785					DESIGN				BID															
	Construction	\$ 181.570										CONSTRUCTION														FFE
	FFE	\$ 9.635																								
	Total Appropriations	\$ 211.990								\$ 20.785		\$ 181.570			\$ 9.635											

SCHOOL SECURITY IMPROVEMENTS



Prior appropriations were approved from FY 2019 - FY 2022, and additional appropriations are requested in FY 2023 and FY 2024, to provide secure vestibules, upgraded intrusion detection systems, and exterior door electronic access locks at schools throughout the County.

Funding will provide enhanced security at school campuses to include: door hardware, electronics and controls at building entries to manage visitor access, additional cameras and iPhones, modified office configurations, access deterrent measures, and interim secure vestibules to provide enhanced security until permanent work can be completed. Additional enhanced visitor management hardware, controls and access deterrent measures also need to be applied to other facilities that already have the necessary vestibule configuration. Significant interior modifications of office and media center spaces at nine (9) high schools are proposed to better align staff resources with enhanced entry security systems.

Project Details	
Election District	Countywide
LCPS Planning District	Countywide
Referendum Date	November 2017,2018,2020
School Year Opening	2021-2024

PROJECT	TASK	FUNDING	FY 2023				FY 2024				FY 2025				FY 2026				FY 2027				FY 2028			
			Q1	Q2	Q3	Q4	Q1	Q2	Q3	Q4	Q1	Q2	Q3	Q4	Q1	Q2	Q3	Q4	Q1	Q2	Q3	Q4	Q1	Q2	Q3	Q4
School Security Improvements	Exterior Doors	\$ 4.785	CONSTRUCTION																							
	Alarm Systems	\$ 2.940	CONSTRUCTION																							
	Secure Vestibules	\$ 85.279	CONSTRUCTION																							
	Total Appropriations	\$ 93.004	\$ 11.615				\$ 2.875																			

SCHOOL BUS REPLACEMENT AND ACQUISITION



This project provides funding for the replacement and acquisition of school buses on an annual basis.

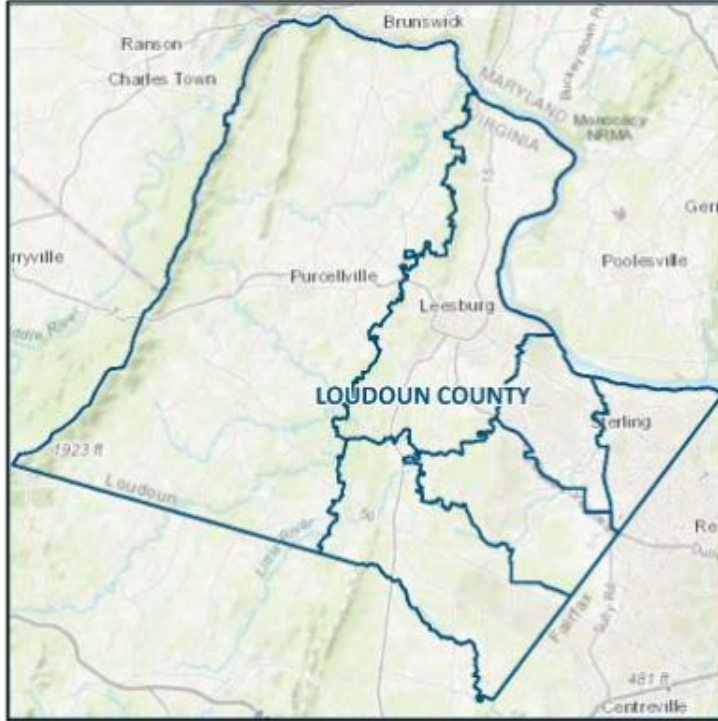
In support of the 2020 Loudoun County School Board resolution on Climate Change, the Division of Transportation began an electric bus pilot program to explore ways to reduce our carbon footprint. LCPS school buses travel over 8 million miles each year and produce over 20 tons of carbon monoxide into the environment. With recent action on climate change and new alternative-fuel products on the market from school bus manufacturers, the LCPS pilot program is designed to test the viability of electric buses to serve our students' transportation needs.

Through a partnership with Dominion Energy, five electric buses have been placed into service and are based (charged) at Park View High School. As part of a 2nd phase of the pilot program, LCPS was recently awarded six (6) electric buses from the Virginia Department of

Environmental Quality, which will be based (charged) at Cardinal Ridge Elementary School and planned for operations in 2022. The pilot program and industry research and monitoring will inform a long-term transportation fleet strategy under development.

PROJECT	TASK	FUNDING	FY 2023				FY 2024				FY 2025				FY 2026				FY 2027				FY 2028			
			Q1	Q2	Q3	Q4	Q1	Q2	Q3	Q4	Q1	Q2	Q3	Q4	Q1	Q2	Q3	Q4	Q1	Q2	Q3	Q4	Q1	Q2	Q3	Q4
School Bus Replacement and Acquisition	Design																									
	Construction																									
	Total Appropriations	\$ 60.300	\$ 8.755				\$ 9.235				\$ 9.745				\$ 10.280				\$ 10.845				\$ 11.440			

LAND ACQUISITION FUND



New school projects are located on sites acquired by proffered conveyance or purchase. When school sites cannot be obtained via proffered conveyance through an approved rezoning, LCPS requests funding to acquire suitable land to develop schools in locations that best serve the County's residents.

Funding is requested to acquire five (5) elementary schools, three (3) middle schools, two (2) high schools, and one (1) support facility during the 30-year CIP from FY 2023 to FY 2052.

Funding for land acquisition is planned up to three (3) years in advance of the commencement of design for school capital projects. Projected residential development in the County's 2019 Comprehensive Plan requires most of the land acquisition funding for new school sites in the first six-years of the CIP. This allows funds to be available early in the CIP to potentially acquire sites before available tracts of land are sold for other purposes.

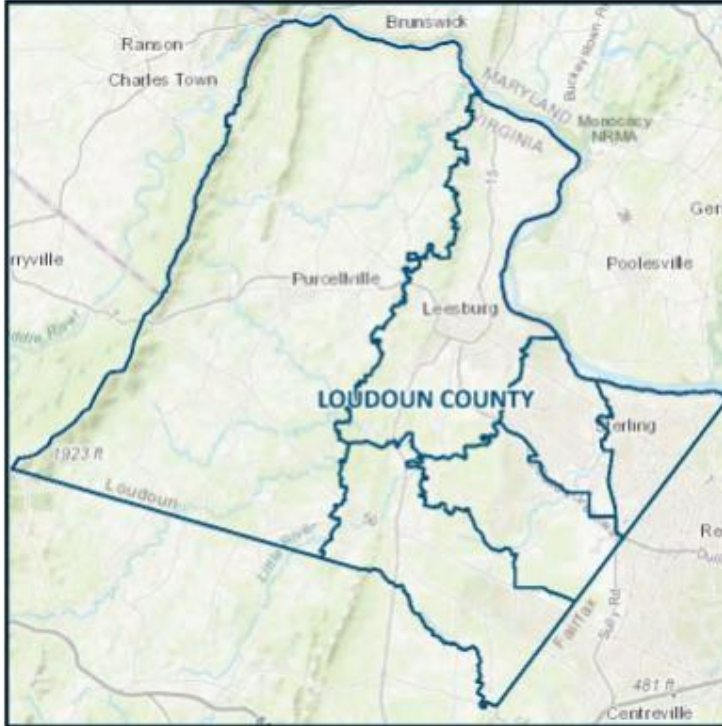
Project Details	
Acres	TBD
Square Feet	N/A
Base Capacity	N/A
Election District	Countywide
LCPS Planning District	Countywide
Referendum Date	TBD
School Year Opening	N/A

PROJECT	TASK	FUNDING	FY 2023				FY 2024				FY 2025				FY 2026				FY 2027				FY 2028			
			Q1	Q2	Q3	Q4	Q1	Q2	Q3	Q4	Q1	Q2	Q3	Q4	Q1	Q2	Q3	Q4	Q1	Q2	Q3	Q4	Q1	Q2	Q3	Q4
Land Acquisition	Design																									
	Construction																									
	Total Appropriations	\$ 54.485	\$		-		\$		-		\$		2.475		\$		8.750		\$		29.510		\$		13.750	

CAPITAL FACILITY RENEWALS AND ALTERATIONS

Prior Years	FY 2023- FY 2024	FY 2025 – FY 2028
Energy Conservation Projects	Energy Conservation Projects	Energy Conservation Projects
Staff Training Center Renewal	Staff Training Center Renewal	Eagle Ridge MS Classroom Addition
Elementary School Stage Access	Park View HS/W.O. Robey HS Addition and Improvements (Design only)	Farmwell Station MS Classroom Addition
Safety & Security Improvements	Safety & Security Improvements	Safety & Security Improvements
Potomac Falls HS Weight Room Expansion	High School Weight Room Expansions	Inclusive Playgrounds
Administrative Office Reconfigurations	Transportation Facility Asphalt Repairs	Transportation Facility Asphalt Repairs
Catoctin ES Addition	High School Baseball/Softball Press Boxes	High School Baseball/Softball Press Boxes
Briar Woods HS Classroom Addition	High School Tennis Court Lighting	High School Tennis Court Lighting
HVAC System Upgrades	Round Hill Center Renewal	Round Hill Center Renewal
Arcola ES Parking Expansion	School Walking Tracks	School Walking Tracks
Park View HS Ticket Booth and Concessions	Modular Classroom Removals	School Bus Washing Station
Waterford ES Modulares	High School Practice Field Turf and Lights	High School Practice Field Turf and Lights
Willard MS Modulares	Banneker ES Addition	Banneker ES Addition
	Fine Arts Storage Improvements	Fine Arts Storage Improvements
	River Bend MS Entrance	Waterford ES Addition
	Unified Communication Systems	Unified Communication Systems
	Privacy Space Conversions	
	Central Vehicle Maintenance/Western Support Center	

ENERGY CONSERVATION PROJECTS



The projects focus on energy conservation in all school buildings, to include:

- Replacing lighting on campus with LED fixtures
- Installing Solar Photo-voltaic arrays
- Replacing electrical transformers
- Recommissioning HVAC energy management systems
- Replacing plumbing fixtures with reduced flow fixtures
- Replacing major mechanical systems
- Applying roof coating and sealant

Funding for the projects are provided from FY 2021 – FY 2029. The focus of the planned work is to reduce utility costs at each school over the next 20 years.

Project Details	
Acres	N/A
Square Feet	N/A
Base Capacity	N/A
Election District	Countywide
LCPS Planning District	Countywide
Referendum Date	TBD
School Year Opening	Various

FINE ARTS STORAGE IMPROVEMENTS



This project provides funding to:

- Design and construct renovations and /or additions to middle schools (17) and high schools (17) to accommodate additional musical instrument storage space within school buildings. Middle School renovations/additions could provide up to 500 square feet of additional space for musical instrument storage at each school. High school renovations/additions could provide up to 900 square feet of additional space for musical instrument storage at each school.
- Design and construct a 900 square foot building for marching band storage, either attached or detached from the main school building as best suited for each site, adjacent to the designated outdoor marching band practice area at each high school.
- Provide for an outdoor marching band observation tower adjacent to each high schools' designated outdoor marching band practice area.

Project Details	
Acres	N/A
Square Feet	TBD
Base Capacity	N/A
Election District	Countywide
LCPS Planning District	Countywide
Referendum Date	TBD
School Year Opening	TBD

HIGH SCHOOL PRACTICE FIELDS



Funding will be provided to install athletic field lighting and synthetic turf to ensure all high schools in the County have two lighted, synthetic turf fields.

The installation of synthetic turf and lights will allow teams to extend the amount of time the fields can be in use for high school athletic teams for practices or matches. The additional high school fields will also be used for County Parks and Recreation athletic programs when the fields are not in use by the high schools.

The project will install synthetic turf at the nine (9) high schools in the County that do not already have a practice field with synthetic turf: Loudoun County High School, Broad Run High School, Potomac Falls High School, Heritage High School, Stone Bridge High School, Dominion High School, Briar Woods High School, Freedom High School, and Tuscarora High School. All high schools in the County will have athletic field lighting installed at one practice field per school.

Project Details	
Acres	N/A
Square Feet	N/A
Base Capacity	N/A
Election District	Countywide
LCPS Planning District	Countywide
Referendum Date	TBD
School Year Opening	Various

HIGH SCHOOL TENNIS COURT LIGHTING



Beginning in FY 2023, funding is requested to install tennis court lights at each LCPS high school where lights do not currently exist. Lighting improvements will be completed over a three-year period. The installation of lights will allow teams to wait out weather delays, avoid the postponement of matches due to loss of light, and enable students to stay in school for the entire instruction day for regular season matches while still completing full length matches.

The fourteen (14) high schools where lights will be installed include: Briar Woods High School, Broad Run High School, Dominion High School, Freedom High School, Heritage High School, John Champe High School, Loudoun County High School, Loudoun Valley High School, Potomac Falls High School, Riverside High School, Rock Ridge High School, Stone Bridge High School, Tuscarora High School, and Woodgrove High School.

Project Details	
Acres	N/A
Square Feet	N/A
Base Capacity	N/A
Election District	Countywide
LCPS Planning District	Countywide
Referendum Date	TBD
School Year Opening	2023-2024 2024-2025 2025-2026

MODULAR CLASSROOM REMOVALS



This project provides funding to remove modular classrooms at schools where the useful life of the modular has been met or exceeded, or where continued maintenance of the modular is cost prohibitive.

Where applicable and practical, every intent will be made to provide additional space at the school to make up for the loss of modular classrooms.

Project Details	
Acres	N/A
Square Feet	N/A
Base Capacity	N/A
Election District	Countywide
LCPS Planning District	Countywide
Referendum Date	TBD
School Year Opening	TBD

PRIVACY SPACE CONVERSIONS



This project provides funding to:

- Continue to expand access to shower rooms, locker rooms, and other private spaces through renovations to locker rooms to provide private shower and changing areas in middle schools and high schools.
- Continue to expand access through renovations to restrooms to provide single occupant, private restrooms, to accommodate students and staff that desire to use private restroom facilities in each school facility.

Staff continues to establish recommendations in consultation with school principals and professional design consultants. The scope of work may vary by school and may be revised as lessons are learned at the school level.

In accordance with School Board action, improvements must be complete by 2026.

Project Details	
Acres	N/A
Square Feet	TBD
Base Capacity	N/A
Election District	Countywide
LCPS Planning District	Countywide
Referendum Date	TBD
School Year Opening	TBD

SAFETY AND SECURITY IMPROVEMENTS



This project provides funding for closed circuit television (CCTV) improvements, security cameras, and servers at schools throughout the County. This funding is being provided in addition to planned appropriations for the School Security Improvements project in the CIP, which provides for external door access improvements and secure vestibules at schools throughout the County.

The following schools will be addressed in FY 2023:

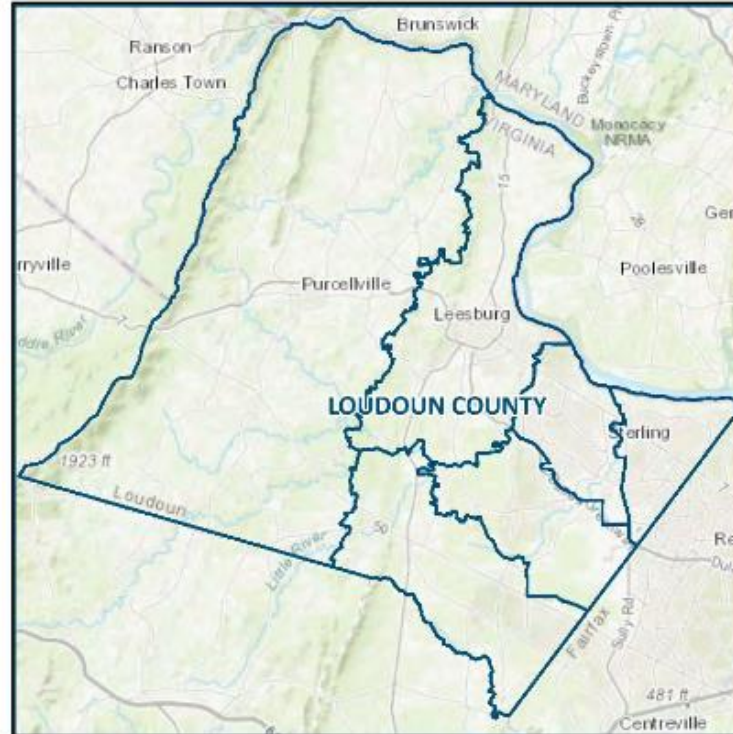
Elementary Schools - Ashburn, Ball's Bluff, Dominion Trail, Evergreen Mill, Hillside, Lovettsville, Lowes Island, Mill Run, Potowmack, Sanders Corner, Sugarland.

Middle Schools - Eagle Ridge, J.L. Simpson, Seneca Ridge.

High Schools – Dominion, Heritage, Rock Ridge.

Project Details	
Acres	N/A
Square Feet	N/A
Base Capacity	N/A
Election District	Countywide
LCPS Planning District	Countywide
Referendum Date	N/A
School Year Opening	Various

SCHOOL WALKING TRACKS



The construction of walking tracks at fifteen (15) schools are recommended to enhance the physical education instructional program at schools that currently do not have a track.

Elementary Schools (12) –Aldie, Algonkian, Countryside, Guilford, John W. Tolbert Jr., Leesburg, Lincoln, Lucketts, Rolling Ridge, Rosa Lee Carter, Sterling, Waterford.

Middle Schools (3) - Seneca Ridge, Smart's Mill, Stone Hill.

The scope of the project may be reduced depending on the allowable use of school cash proffers, as determined by the Town of Leesburg, to provide for school walking tracks at schools located within the Town limits.

Project Details	
Acres	N/A
Square Feet	N/A
Base Capacity	N/A
Election District	Countywide
LCPS Planning District	Countywide
Referendum Date	TBD
School Year Opening	Various

UNIFIED COMMUNICATION SYSTEMS



Unified Communication Systems (UC) are the modern replacement for school intercom, public address, paging, and telephone systems. They create a single integrated system to support school communications and safety. UC systems are IP-based and require new cabling as they do not utilize existing speaker or telephone cabling.

Many of the current systems in LCPS are over 20 years old with the oldest equipment still in use from the 1970's. Funding is provided to establish a yearly refresh cycle for the legacy system equipment and to provide additional data cabling to support network-connected UC components.

Project Details	
Acres	N/A
Square Feet	N/A
Base Capacity	N/A
Election District	Countywide
LCPS Planning District	Countywide
Referendum Date	TBD
School Year Opening	TBD



Capital Budget Community Meeting on Future School Facility Projects - Dulles North Area Focus

June 16, 2022